



# Collax Network Storage

## Highlights >

- > Central file & print server for Windows, Unix, Linux and Mac environments
- > Easy data distribution and protection thanks to encrypted data synchronization
- > Smart wizards for quick setup
- > Integrated backup/restore that takes ACLs into consideration
- > Easy use through single sign-on
- > Easy integration into Windows or Collax permission systems
- > File quota for users and groups
- > Logical volume manager for variable storage needs
- > Data protection through optional virus scanner
- > Enlarge or downsize storage space during operation

## Central File & Print Server for Assorted Networks

Need future-proof storage for your IT infrastructures? In the most optimal way the **Collax Network Storage** introduces functionality that facilitates company-wide teamwork. It provides access to data stored on a variety of operating systems and enables effortless administration. Smart wizards accelerate setup and therefore enable fast adoption of the central data storage on your network. Integration with existing Windows or Collax user management is possible without any effort. This means that the user management workload is reduced considerably. Individual permissions for users or teams are a must for optimum teamwork without jeopardizing sensitive data. The Collax permission system enables the assignment of granular rights and quotas to individual users and groups. The integrated print server enables easy and central management of both network and locally connected printers.



plementation is mandatory. Logical Volume Management (LVM) supports storage space of up to 16 TB. One of the strengths of LVM is the possibility of resizing storage space on the fly.

### Team Working

Productivity of any company is directly associated with the level of team working it adopts. The **Collax Network Storage** is the easiest way in improving team working in a safe and secure way. By centrally storing data not only is consistence improved, but also transparency in their working. Everyone can see how things progress and everyone works off the same content. Deadlines are now hit more reliably. **Collax Network Storage** not only provides you with centralized storage, but it does so in a safe and secure way.

### Storage that is a Step Ahead

To stay abreast of the continuously growing demand for storage of data and information a future-proof and flexible im-

### Optimized Collaboration

Even in smaller environments it is often necessary to exchange or synchronize data with other departments and locations. To meet this need **Collax Network Storage** supports encrypted synchronization with which company data can be distributed to other servers or locations. Remote staff can also optimize their daily processes by securely synchronizing their data with central data storage. If necessary the network bandwidth for the synchronization can be adjusted in order to avoid excessive loads or to speed up data synchronization. The flexible timer control facilitates the adaptation of synchronization to department and location workflows, thereby increasing the efficiency of the collaboration.



## Technical Highlights

### File Server

Windows file shares SMB, CIFS | FTP | NFS | Apple file share | WebDAV | TFTP | user and group management | quotas | virusprotection (optional) | data synchronization | logical volume management | resource forks for Apple share | rsync synchronization | rsync via SSH | Unison | Unison via SSH | manual synchronization | print server for network printers | print server for locally connected printers (optional) | archive import

### Networking

Ethernet | route | tagged VLAN | link aggregation (round robin, broadcast, XOR, adaptive load balancing, 802.ad) | DNS | DHCP

### User Page/Web Access

User access via HTTPS | documents and full-text search | Web-based file manager

### Backup

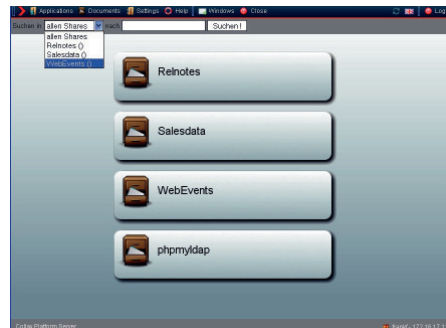
Tape | tape library | SMB | NFS | iSCSI targets | incremental, differential, and full backups | tape rotation | timer-controlled backup plans | individually integrated back-up plants: towers of Hanoi, grandfather-father-son | manual backups | restore of complete backups or individual files | complete system recovery | e-mail notifications

### User Management

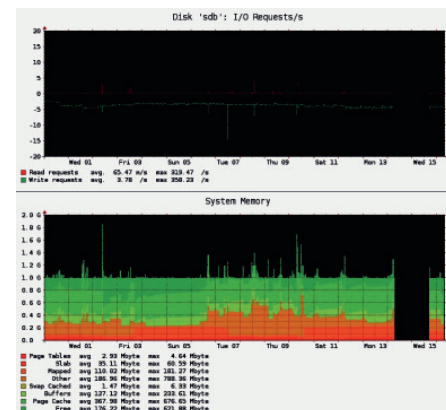
Central user and rights management | LDAP master | LDAP proxy | LDAP replica | primary DC | backup domain controller | Active Directory proxy | Kerberos

### Server Management

Active system monitoring | delegable administration | configuration database | configuration report | event analysis | central and decentralized event monitor | remote administration via HTTPS | graphical statistics of CPU, RAM, hard disks, file system, services | Intel AMT remote-management | UPS support via network, USB, and serial | system tools for network and orphaned data | monitoring via SNMP or NRPE | central time server (NTP) | firewall logging and reporting for connections | online help



Keeping track with the help of graphical analyses.



Detailed graphical analyses of the system components.

### Extensions

- **Collax Virus Protection** (optional)
- On-access virus scanner Avira AntiVir (optional)
- Centrally administered backup server for server and clients (**Collax Net Backup**)
- Audit-proof archiving solution for mail traffic (**Collax E-Mail Archive**)

### System Requirements\*

- Installed **Collax Platform Server**
- Intel Pentium or compatible\*
- Recommended: HDD in RAID 1 array
- Bootable CD-ROM drive
- Hard disk: 8 GB
- One network interface
- RAM: 512 MB
- VGA-capable graphics adapter (only during installation)

\*For the virtualization, the processor must support Intel VT or AMD-V.

## You have more questions? Feel free to contact us at:

Collax GmbH  
Gutenbergstraße 1  
85737 Ismaning Germany  
Telephone: +49 (0) 89-99 01 57-0  
Fax: +49 (0) 89-99 01 57-11  
0800 4265529 (Free in Germany)  
www.collax.com sales@collax.com